



**SUSTAINABLE
SOLUTIONS.**





**IMPROVING THE QUALITY
OF LIFE WORLDWIDE.**



SUSTAINABLE SOLUTIONS

With an ever increasing population and a rise in urbanization and infrastructure development, environmental issues, culminating also in changes to our climate, are some of the main obstacles that the world faces today. In line with its corporate sustainability objectives, ILF strives to create better living conditions and improve the quality of life worldwide.

ENVIRONMENT

ILF is both enthusiastic about the environment and serious about sustainable development. Thus, for all of its commitments, ILF adopts a meaningful management approach. This enables effective and efficient decision-making to ensure long-lasting outcomes.

ILF achieves this by:

- identifying and unlocking the potential to have a positive impact
- respecting local issues and balancing these with international standards, as well as ILF's own innovative solutions
- promoting seamless collaboration to provide holistic solutions
- improving environmental performance to contribute to the creation of a more sustainable world

SOCIAL

ILF is passionate about people and personally pledges to do business responsibly.

ILF aligns its strategies and operations with good corporate governance, placing importance on treating everyone with respect and dignity, regardless of position, ethnicity, religion, or gender.

With its positive contributions to the wellbeing of the individuals and communities in which ILF operates, ILF prioritizes sustainable development, with the view to achieving socially-inclusive outcomes.

ILF achieves this by:

- gaining and maintaining the 'social license to operate', through meaningful engagement, participation, monitoring and evaluation
- safeguarding livelihoods and facilitating sound socio-ecological transformation towards responsible resource consumption
- creating solutions that promote diversity, equality and inclusion
- advocating social responsibility and implementing globally compatible and integrated solutions

CLIMATE

As climate custodians, ILF advises on policy, and identifies measures to adapt to and mitigate climate impacts, with the aim of achieving asset and service resilience.

ILF achieves this by:

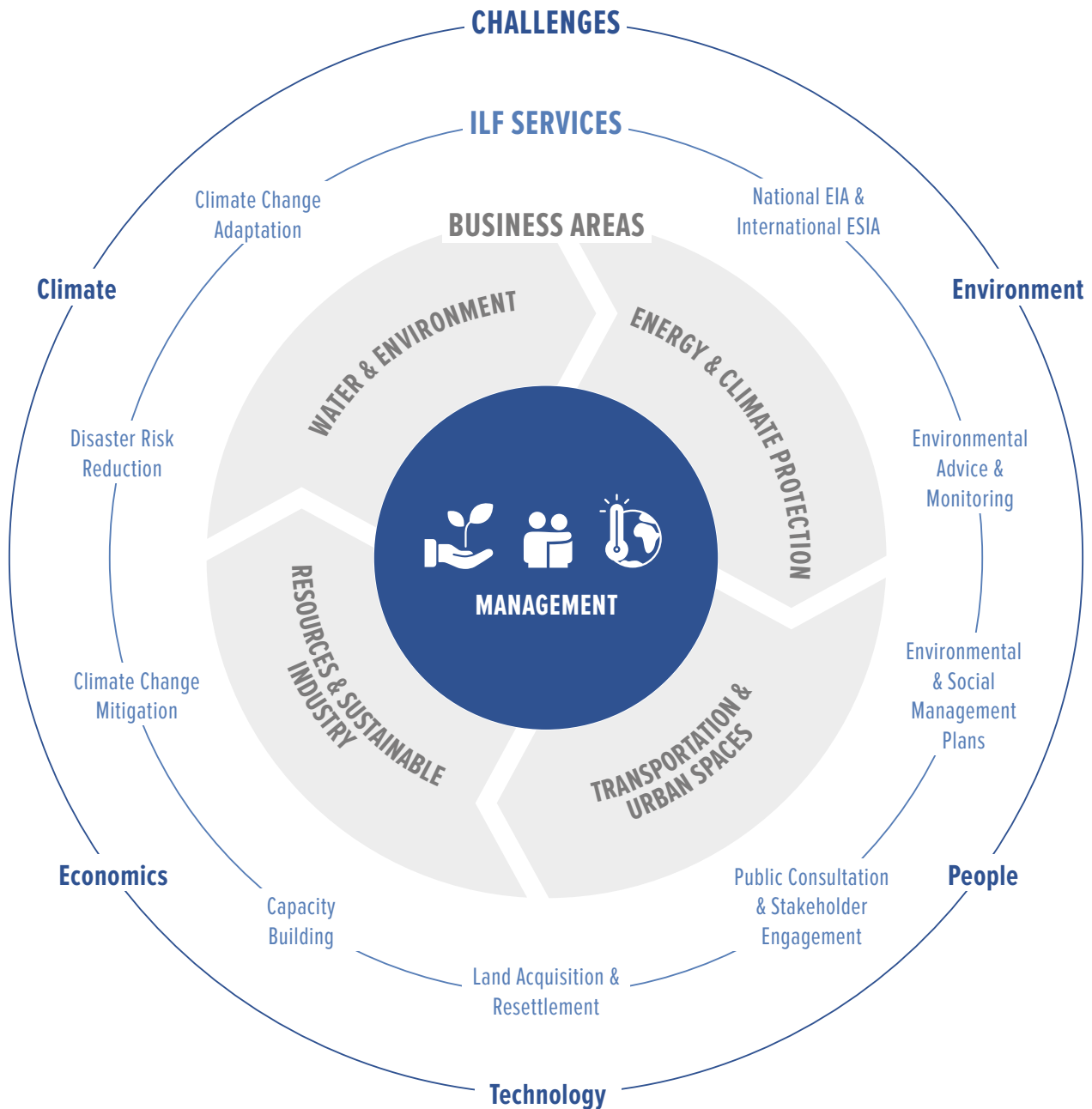
- increasing awareness of risks and reducing vulnerabilities
- incorporating climate resilience into decision making and planning
- promoting actions which limit the magnitude or rate of global warming
- specifying climate-resilient infrastructure to "future-proof" assets
- devising solutions for adaptation to climate change, to help reduce the vulnerability of social and biological systems.



“Sustainability means future viability – for the ILF Group and for society.”

Klaus Lässer, CEO

ILF SUSTAINABLE SOLUTIONS – AT THE CENTER OF POSITIVE CHANGE



ENVIRONMENTAL MANAGEMENT



SOCIAL MANAGEMENT



CLIMATE CHANGE MANAGEMENT



**SAFEGUARDING
RESOURCES**



**SUSTAINABLE
DEVELOPMENT**



**SAFEGUARDING
LIVELIHOODS**



**REDUCING
VULNERABILITY**



CONSULTING
ENGINEERS

www.ilf.com