



**PIPELINES.**

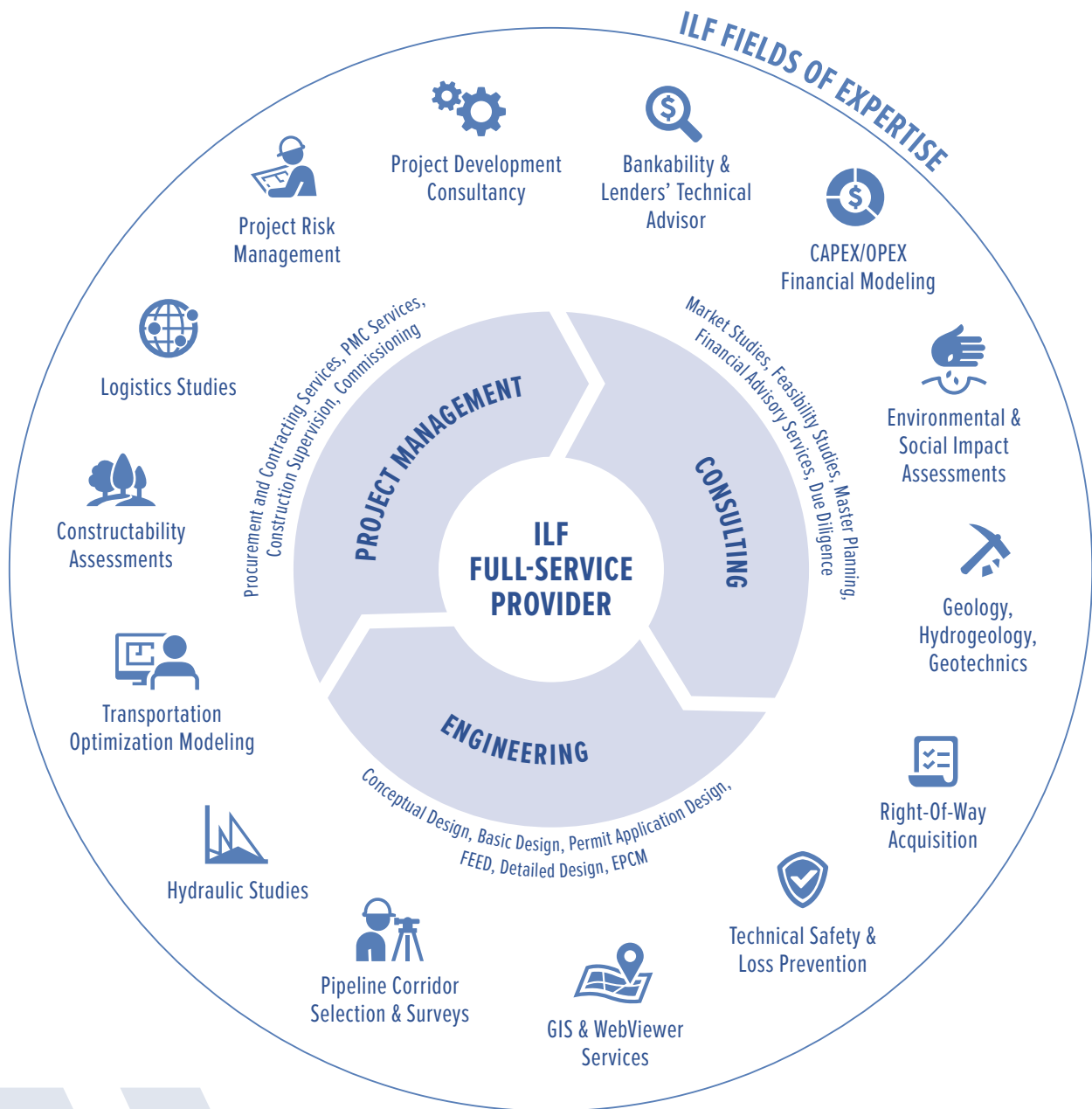
**ENGINEERING EXCELLENCE.**



CONSULTING  
ENGINEERS

# PIPELINES

Industrial pipelines represent the safest and most environmentally friendly way of transporting large volumes of liquids and gases. Not only is demand for the construction of new pipelines to transport natural gas growing, but technological developments are also creating the need for pipelines for special products such as Natural Gas Liquids (NGL), hydrogen and chemicals. As a full-service provider for consulting, engineering and project management services, ILF can be engaged by clients to take care of all the phases of pipeline projects, from project initiation, design and tender, to commissioning and start-up.



**ENR**  
 Engineering News-Record  
**2020**  
 Top 225  
 International  
 Design Firms

**ILF RANKED 4<sup>TH</sup> TOP INTERNATIONAL DESIGN FIRM FOR PIPELINES  
 BY THE ENGINEERING NEWS RECORD IN 2020**

[WWW.ILF.COM/BUSINESS-AREAS/OIL-GAS-INDUSTRIAL/PIPELINES/](http://WWW.ILF.COM/BUSINESS-AREAS/OIL-GAS-INDUSTRIAL/PIPELINES/)

For over 50 years, ILF has been providing services for outstanding pipeline projects, with the largest pipelines implemented by ILF having investment values of more than 10 bn USD. ILF has a long-standing record of managing different stakeholders, permits in several countries and agreements relating to cross border pipelines. For existing pipelines, ILF develops project-specific solutions for rehabilitation and implements Pipeline Integrity Management Systems (PIMS).

ILF has created innovative technical solutions for all kinds of pipelines, including those ...

- in extreme mountainous terrain,
  - in rainforests and swamps,
  - in the Arctic and permafrost regions,
  - offshore, up to a water depth of 800 m,
- as well as for up to 56" high pressure oil and gas pipelines, and up to 80" water supply pipelines.



*“For ILF’s pipeliners there is no such thing as a standard pipeline project. Social and environmental sustainability, country-specifics, engineering excellence, constructability and adaptation for optimal operation, are instead the clear focus within projects.”*

Maximilian Pfnür,  
Managing Director – ILF Abu Dhabi

## PROJECT HIGHLIGHTS

- Baku–Tbilisi–Ceyhan (BTC) Crude Oil Pipeline, > 1,000 km oil pipeline, 46“, 42“ and 34“, 4 pumping stations, Turkish section
- Trans Anatolian Gas Pipeline (TANAP), > 2,000 km gas pipeline, 56” – among the largest pipelines in terms of diameter and CAPEX, Turkey
- Trans-Asia Gas Pipeline (TAGP), 1,825 km gas pipeline, 2 x 42“, 8 compressor stations, Uzbek-Kazakh section
- Trans-Adria-Pipeline (TAP), 130 km offshore pipeline, 36“, and 290 km onshore pipeline, 48“, Greece/Albania/Italy
- Abu Dhabi Crude Oil Pipeline Project (ADCOP), 403 km oil pipeline in extremely mountainous terrain, 48“, United Arab Emirates
- Common Seawater Supply Project (CSSP), > 390 km multiple pipelines, 56“, 12.5 mmbwpd, Iraq



Trans Anatolian Gas Pipeline (TANAP), Turkey



Trans-Asia Pipeline (TAGP), Kazakhstan & Uzbekistan



Gas motor-driven pumps, Baku–Tbilisi–Ceyhan (BTC) Pipeline, Turkey



Expansion of the Lam & Zhdanov Fields, Caspian Sea, Turkmenistan



CONSULTING  
ENGINEERS

[www.ilf.com](http://www.ilf.com)